



**A-LIST™ Playlist Automation** from RUSHWORKS

- Drag and Drop Interface
- Create Daily Playlists
- Display Clips and Graphics
- Import/Display metadata
- AutoBug feature
- Two Level Crawl
- EAS support

Please contact us at 888.894.7874 if you have any questions.

---

## Hardware

The **A-LIST** system includes a computer, monitor, keyboard and mouse with all the cables needed to connect them together. The A/V output is via breakout cables that attach to the output card on the rear of the system. For connection details please jump to the [Connections](#) page.



Your **A-LIST** system has been custom built to fit your needs and may vary from the pictures. It comes in both desktop and rack mount versions. These illustrations may differ from your exact model, but the basics remain the same.

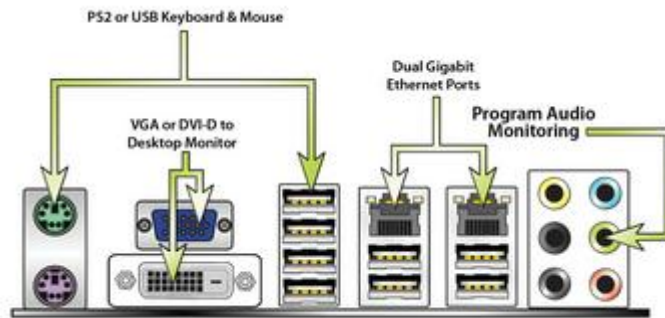
---

## Connections

**PLEASE CONNECT POWER LAST!** Your new **A-LIST** system is designed to automatically restart in the event of a power failure so it will start up immediately upon receiving power. **DO NOT** connect the power supply until all other connections are made.

### MOTHERBOARD

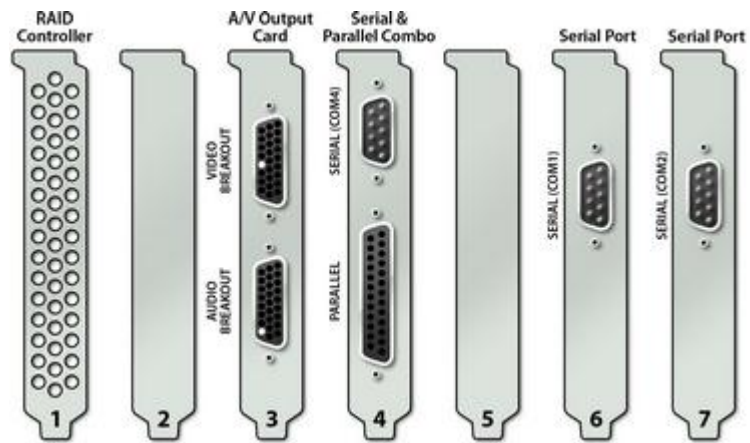
Your **A-LIST** system connects to a keyboard, mouse, and monitor like any other computer. Keep in mind that the user interface requires a monitor with 1920x1080 resolution. Also note the DVI port is DVI-D only. **Program Audio** can be monitored from the system sound output.



### EXPANSION SLOTS

The expansion slots on your **A-LIST** system should look similar to those shown here. Please notice that there are different pins missing in the Video and Audio Breakout connectors so that they can only be connected to the proper jack on the card. The Parallel and Serial ports are for optional devices.

*Note: You can also find a sticker on the top of your computer showing this information.*



### BREAKOUT CABLES

All outputs are active so you may use the output that best suits your facility. Composite video out is labeled **Y/CVBS OUT A**, and SDI video (with embedded audio) is labeled **SDI OUT A**. **AES audio** can be found on the video breakout cable as well, and is labeled **AES OUT 1/2**. Analog balanced audio can be found on the audio breakout cable and is labeled **OUT 1** and **OUT 2**.



**IMPORTANT:** The **REF IN** and **CVBS IN** on the **VIDEO BREAKOUT** cable must both be connected to reference video.

## STREAMING OPTION

The streaming device video input will need to be connected to the **CVBS OUT B** connector on the **VIDEO BREAKOUT** cable. Audio **OUT 3 & 4** on the **AUDIO BREAKOUT** connector needs to be connected to the **Line Input (light blue)** 3.5mm audio connector on the motherboard. Adapters are included to make these connections possible. The audio connectors on the streaming device will not be used.



## POWER SUPPLY

After everything else is connected and ready connect the power supply to an electrical outlet. If you have the optional redundant power supply then BOTH connectors must be connected or an alarm will sound.



**STANDARD  
POWER SUPPLY**



**OPTIONAL REDUNDANT  
POWER SUPPLY**

## Software

After powering up the system the **A-LIST** software will automatically start. If for some reason you ever need to start it manually just double click the orange "**AL**" icon. Once the software has completed starting up you will see this user interface.



The **A-LIST** user interface has different windows for controlling different functions:

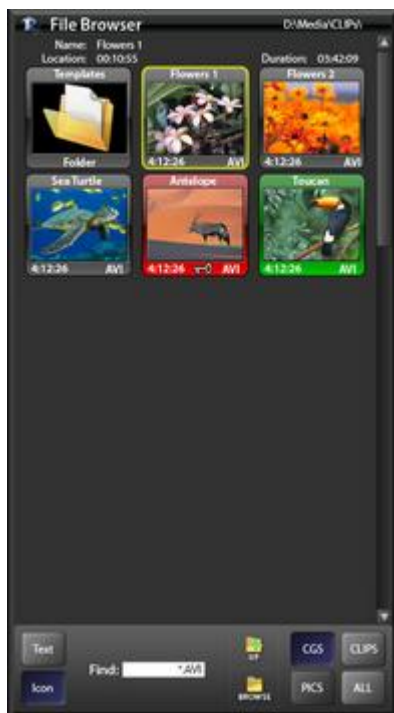
1



At the top left of the screen you will see the **Preview** window. You can view files from the file browser here and cue them up for playback on air.

*NOTE: During automation playback the file preview feature is disabled*

2



Below the Preview window you will find the **File Browser** window. This will allow you to select clips or graphics to playback manually. There is also a search box to quickly find the clip you need, as well as preset folder buttons for jumping between file types when using the **MEDIA** folder on the D: drive. There are two views available, text and icon view.

*NOTE: During automation playback the file preview feature is disabled*

3



To the right of the Preview window you will find the **Playlist** window. This window displays the list of clips scheduled to play. **OPEN LIST** allows manual loading of a new playlist, and the **>** will allow setting of the auto load, or day change time. There are two views available, text view and icon view

*NOTE: In automated mode the system will automatically load the next day's playlist at midnight. The naming format is:  
YYYY-MM-DD.rwpls*

4



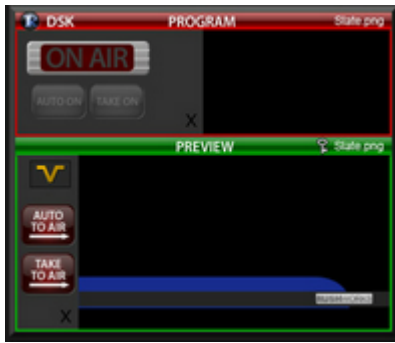
Toward the right side of the screen is the **Program Monitor**. This screen shows what is being output to air. There are also controls to display a **BUG** and **CRAWL**, **Headphones** to monitor audio, and **PLAY/STOP** controls.

5



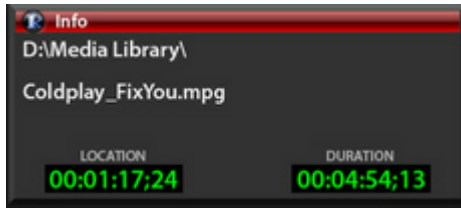
To the right of the Program window is the **Clock and Audio** window. It displays the current time, a counter, and levels of the system's audio output. A slider is provided allowing you to adjust the master volume. There is also a mute button which will completely silence any audio output.

6



Below the Program window on the left you will find the **DSK** window. Any time a still image or key graphic is selected in the **File Browser** it will display on preview here. **AUTO TO AIR** or **TAKE TO AIR** will move the file to the program area and display the image on air. The **ON AIR** light will illuminate and the controls to remove from air will become active.

7



The **INFO** can be found below and to the right of the Program Monitor. It displays information on what is being output to air. This includes the **FILE PATH, FILE NAME**, timecode **LOCATION** of the current frame displayed, and **DURATION** of the clip on air.

8



At the bottom right of the screen you will find the [SETTINGS](#) window. This displays the name of your product, the version, and provides access to the help file as well as a button that opens the [CONFIGURATION](#) window.

## AutoBug

The **AutoBug** feature can be set up by right clicking the **Ladybug** button on the program window.



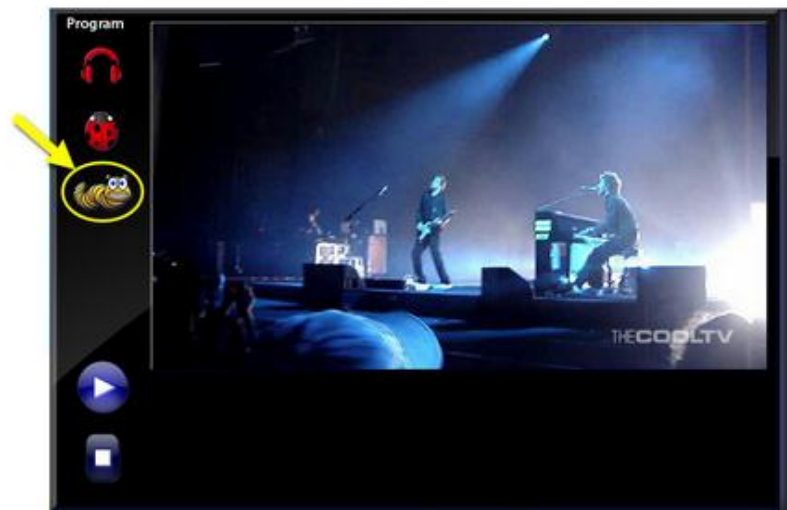
After you right click the button a standard select file window will appear. Select any **.PNG** file and click "Open".

You can now manually trigger your bug by clicking the Ladybug once to turn it on, and again to turn it off. The **AutoBug** will now appear on any files over 2:02 long. It will fade on five seconds into the file and fade off five seconds before the end of the file.

---

## Text Crawl

The **Text Crawl** feature consists of THREE separate crawls. **Crawl 1** can be set up by right clicking the **Caterpillar** button.



### **TEXT CRAWLS**

The **Caterpillar** button allows access to **Crawl 1** and **Crawl 2**. Crawl 1 can be activated by left clicking on the caterpillar and Crawl 2 by ALT+Left clicking. Setup of Crawl 1 is done by using the right mouse button, and Crawl 2 by holding Alt while right clicking.

After you right click the button a "Setup Text Crawl" window will appear. Enter the text you wish to display in **Crawl 1** and then click "OK". You can turn the crawl on by clicking once on the caterpillar, and turn the crawl off by clicking again.

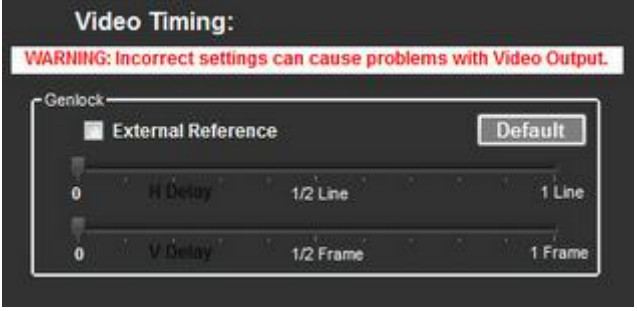
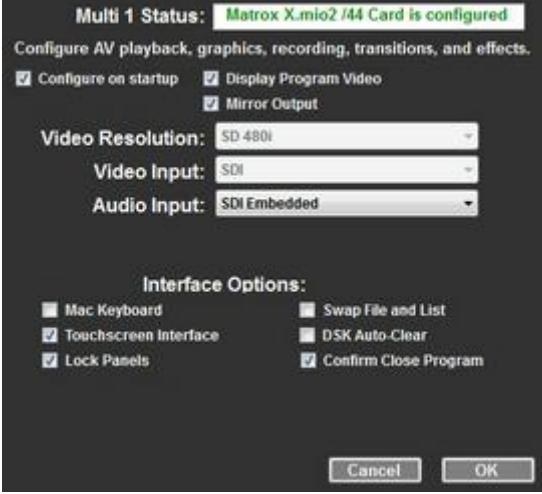
To set up **Crawl 2** hold the **Alt** button and **Right Click** the same caterpillar button. Now you will see the "Setup Text Crawl" window again, but the text entered here will only show when you Alt + Left Click the caterpillar.

---

## Configuration

The **Configuration** window can be found by right clicking the title bar of the Settings panel and selecting **Configure...**

There are multiple tabs and some may not apply to your particular product.

<p style="text-align: center;"><b>VIDEO TIMING</b></p> <p>If you are using <b>External Reference</b> then jump to the <b>Timing</b> tab and check the box. The sliders will allow you to precisely trim the <b>H Delay</b> and <b>V Delay</b> to correct the signal. Clicking the <b>Default</b> button will reset the settings. These adjustments happen in real time on the video output.</p>	
<p style="text-align: center;"><b>OPTIONAL SETUP</b></p> <p>Additional settings on the <b>Setup</b> tab are preconfigured and do not need to be changed.</p> <ul style="list-style-type: none"><li>-<b>Mirror Output</b> allows output B to be used for streaming.</li><li>-<b>Lock Panels</b> prevents the user from rearranging the user interface.</li><li>-<b>Confirm Close Program</b> alerts the user when the close (X) button is clicked to prevent accidental closure.</li></ul>	

## Options

Each **A-LIST** system is custom built to fit the customer's needs. There are many options available including:

[Streaming](#)

[EAS Interface](#)

[RAID Storage](#)

HD Playback

Multi-Channel Playback

Redundant Power Supply

Please contact RUSHWORKS at 888.894.7874 if you would like more information about these options.

## Streaming

**A-LIST** systems with the streaming option will include a **USB-Live 2** device. Please connect as illustrated below.

### **USB-Live 2 Option**

If the streaming option was purchased you will have a Hauppauge! USB-Live 2 in the system accessories bag. This needs to be connected to one of the USB ports on the rear of the system. There is a small break out cable included. Please connect that as shown to the right.



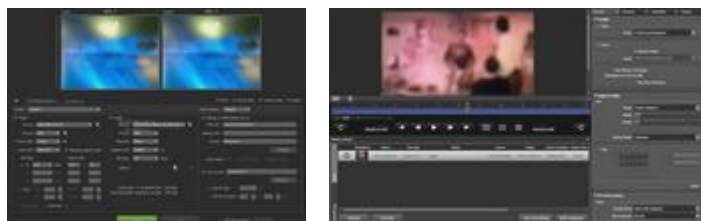
### **Connecting the Line Input**

Once plugged in to a USB port the video output of the system must be fed back to the input device from the **CVBS OUT B** connector on the **VIDEO BREAKOUT** cable. **OUT 3 & 4** on the **AUDIO BREAKOUT** connector must be connected to the **Line Input (light blue)** 3.5mm audio connector on the motherboard. Adapters are included to make these connections possible. The audio connectors on the streaming device will not be used.



### **Flash Media Encoder or Expression Encoder setup**

Please refer to your streaming provider for appropriate settings.



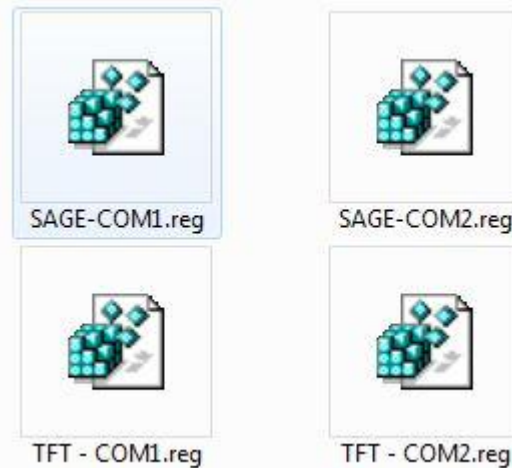
## EAS Interface

To set up **A-LIST** with your EAS system you must first exit the **A-LIST** software and make sure your EAS system is powered on and connected properly. Open the folder on your desktop called "EAS Setup". If you need to verify which COM port your EAS system is connected to, please check the [Connections](#) page. Once you are certain of the port is connected to then double click the corresponding file.

You will see a warning about adding keys to the registry.



Confirm that you wish to continue.



Next, connect the analog audio out of your EAS system to the XLR labelled **IN 1** on your **A-LIST**. Set the **AUDIO INPUT** on the [Configuration](#) page to **Analog**. (EAS can use AES/EBU Digital input if your EAS device supports that audio type)

Finally, start up the **A-LIST** software. Once startup is complete run a test on your EAS system. You should see the "EAS" icon light up on the program monitor. You should also see the message crawl and hear the audio on program out and program audio monitoring.



**If you need to setup your EAS system and you are missing the "EAS Setup" folder on your desktop, please download [EAS Setup](#).**

Make sure your hardware is set as below and connect it to your computer with an RS-232 "null modem" cable.

Sage units must be set to output "Generic CGen" information at 9600-8-None-1

TFT devices must be set to send Chyron "CODI" CG information on the device's "COM2 Character Generator" port at 9600-8-None-1

## RAID Storage

Optional RAID Storage can come in many flavors. The most common are RAID 1 and RAID 5. Our RAID 1 systems typically use internally mounted drives. RAID 5 systems use a hot swappable cage that is accessible from the front of the unit.



Hard drives in an array **SHOULD NOT BE REMOVED** unless a failure has occurred. The power buttons to the right of the drives should be used only when swapping a failed drive for the replacement. If a drive has failed please call RUSHWORKS support at 888.894.7874 extension 2 for warranty replacement.

RAID 5 units can be migrated to larger drives while remaining online for future upgradability.

---

## RUSHWORKS Contact & Support Info

**A-LIST™** is a product of **RUSHWORKS**

© copyright 2010, all rights reserved

[www.RUSHWORKS.tv](http://www.RUSHWORKS.tv)



**SUPPORT AND TECHNICAL ASSISTANCE FOR *A-LIST*  
IS AVAILABLE VIA EMAIL OR TELEPHONE\***

[support@rushworks.tv](mailto:support@rushworks.tv)

**888.894.7874 x2**

\*No charge for support if contract is active.  
Without contract support is charged at the current hourly rate.