

MPEG.Rx
FILE PHARMACY X

Rippitt?

Rip content from DVDs to your video server
with CONSISTENT AUDIO LEVELS

· LIMIT AND COMPRESS
· NORMALIZE to -12dB

Only
\$249

Download FREE TRIAL at RushWorksMedia.com

RUSHWORKS

MPEG.Rx

Contents

Introduction.....	3
Getting Started.....	4
Technical Specifications.....	5
Downloading.....	6
Installation.....	7
Program Folder.....	11
Media Folders.....	11
Uninstall.....	13
Trial Version.....	13
Purchasing & Registration.....	15
Start Up.....	18
Interface: Event Log & Options.....	18
The Options Screen.....	20
The System Configuration Tab.....	20
Process Priority / Restore Defaults Section.....	21
Archive File Deletion Section.....	22
Audio Properties Section.....	22
Video Properties Section.....	25
The Folders Tab.....	26
The Help & Support Tab.....	27
Processing Files.....	28
Batch Processing MPEG-2 Files.....	28
Processing a DVD.....	29
Event Log / Processing Messages.....	29
Glossary.....	31
RUSHWORKS Contact & Support Info.....	31

Welcome to MPEG.Rx!

Users of MPEG-2 files consistently report problems with 'sick' files ... unreliable quality, audio issues and problematic playback. These are typical results from two specific file creation processes: files ripped from DVDs (VOB files) and files that have been output from non-linear editing systems.

MPEG.Rx has been designed to quickly and easily restore the health of your MPEG-2 files to a consistent and editable quality. You simply drop files into a processing folder called the **Watch** folder. Once inside, **MPEG.Rx** applies 'intelligent' limiting, compression and normalization, resulting in 'healthy' files that have uniform audio levels as well as a repaired and regenerated file structure for reliable playback.



How does it work?

MPEG.Rx automatically repairs and regenerates your MPEG-2 files structure. It does this by examining the program stream and conforming it to the proper standards. Most time-code errors, packet structure problems, lip sync offsets (if not created in the original file) and file splits will be detected and corrected.

During processing, **MPEG.Rx** provides the user with controls to manage several parameters of the file structure. Each of these settings can be set individually, adjusted or disabled.

- Video Bitrate
- Aspect Ratio
- GOP structure
- Audio Bitrate
- Sampling Rate
- Audio compression
- Audio Limiting
- Audio Gain

In general, you won't need to change ANY of the default settings in the program. We've set the defaults for optimal results on all files ... **so it's truly a "set it and forget it" solution.**

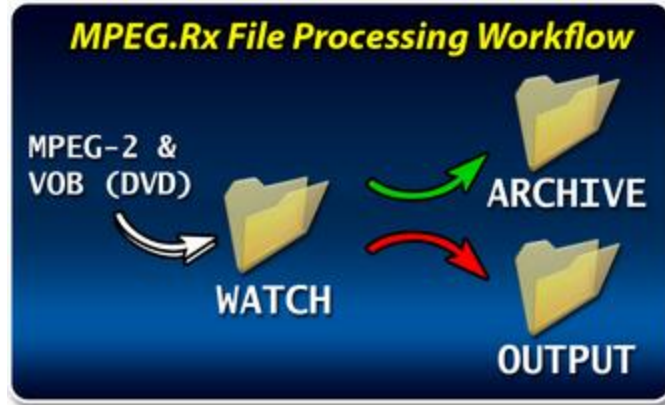
MPEG.Rx provides an integrated workflow solution for your growing MPEG-2 library. You can process a single file - or drop any number of files into the Watch folder for "batch processing". And you can provide access to the Watch folder by authorized users on your network.

MPEG.Rx also archives your original files and lets you specify a window of time to preserve these files before automatic deletion. If you desire not to delete archived files automatically you can disable this feature.

Currently, **MPEG.Rx** works exclusively with MPEG-2 files.

MPEG.Rx is designed specifically to correct problems with MPEG-2 files that often cause inconsistencies and unreliable playback on video servers.

MPEG.Rx is a WORKFLOW SOLUTION ...
... so there is really no traditional "User Interface".



By creating a WORKFLOW whereby you drag and drop ALL your MPEG-2 files (including VOB files ripped from DVDs) into the MPEG.Rx **Watch** folder, you should achieve a significantly improved level of consistency and reliability in your server playback.

This Help file (and the associated Manual) provide you with a comprehensive overview of the general workings of the application, and should be a good source of information - as and when required.

So get into the FLOW ... and appreciate the results immediately!

**SUPPORT AND TECHNICAL ASSISTANCE
FOR MPEG.Rx IS AVAILABLE VIA EMAIL ONLY:**

rxsupport@rushworksmedia.com

If you're ripping VOB (MPEG-2) files from DVDs for server playback... this is JUST what the doctor ordered!

MPEG.Rx™

FILE PHARMACY X

- ✓ Drag and Drop MPEG-2 / DVD files
- ✓ Repairs and regenerates files at up to 30x
- ✓ Optimizes audio levels to -12dB

* Coming soon: transcode to MPEG-4, H.264, AVCHD

MPEG-2 & DVD → **WATCH** → **OUTPUT**

WATCH the DEMO!
Low bandwidth version

DOWNLOAD the Installation Guide!

TRY NOW! Designed for the Windows Operating System

Convert a single MPEG2 file, DVD programs (VOBs), or an entire video library at up to **30X** real-time!

Technical Information | System Requirements | Try MPEG.Rx now! (time limited version)

You can find Technical Information and System Requirements about **MPEG.Rx** on the RUSHWORKS Web site (www.RushWorksMedia.com/MPEGRx.html)

The location of these links is circled in green in the image above.

Technical Information

Technical Information

For Technical Information about **MPEG.Rx**, click the link at the bottom of the screen.

MPEG.Rx Technical Specifications	
File Format Support	.mpg, .mpeg, .vob
Video Processing Features	Bitrate Conversion, Aspect Ratio Flag Change, GOP Structure Adjustment
Audio Processing Features	Normalization (-6dB to -12dB), Compression (variable gain), Bitrate Conversion, Sampling Rate Conversion
Archiving of Source Files	Keep original MPEG files and DVD files archived separately with automatic deletion after a user-specified duration

System Requirements

System Requirements

For **System Requirements**, click the link at the bottom of the screen.

MPEG.Rx System Requirements	
MPEG.Rx supports dual and quad core processors!	
Operating System	Windows 2000, XP, Vista
Processor	Pentium 4, Celeron, or AMD - 2.8 GHz or faster Dual Core Processor Recommended
RAM	512MB Minimum, 1GB Recommended
Hard Disk	15MB for installation, dedicated media drive recommended for processing files

Downloading



If you're ripping VOB (MPEG-2) files from DVDs for server playback... this is JUST what the doctor ordered!

MPEG.Rx

FILE PHARMACY

- ✓ Drag and Drop MPEG-2 / DVD files
- ✓ Repairs and regenerates files at up to 30x
- ✓ Optimizes audio levels to -12dB

* Coming soon: upgrade to MPEG-4, H.264, AVCHD

MPEG-2 & DVD → WATCH → OUTPUT

WATCH the DEMO!
Low bandwidth version

DOWNLOAD the Installation Guide!

TRY NOW! Designed for the Windows Operating System

Convert a single MPEG2 file, DVD programs (VOBs), or an entire video library at up to **30X** real-time!

Technical Information | System Requirements | Try MPEG.Rx now! (time limited version)

www.RushWorksMedia.com/MPEGRx.html

Installation Guide

Click on the PDF icon to open the **Installation Guide**. This is a one page informational document that will walk you through program installation.



TRY NOW!

To download the **Trial Version** of **MPEG.Rx**, click the **TRY NOW!** button.

If you are ready to install the Trial version or a Registered version of **MPEG.Rx**, click the **TRY NOW** button.



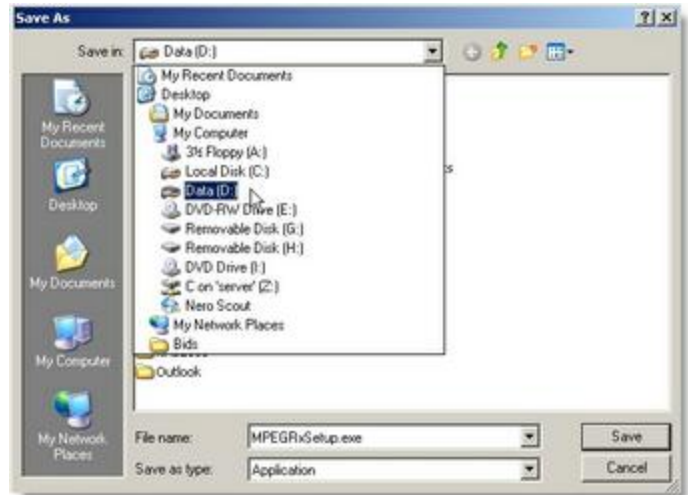
The download dialog will appear. Click **Run** to launch the installation routine and proceed to [Installation](#).



If you choose **SAVE**, select the destination Drive for the **MPEG.Rx** installer.

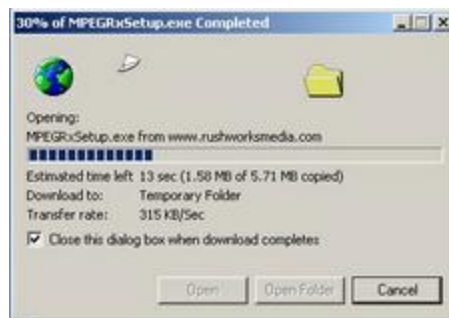
Go to the saved file location and double-click the installer to launch the installation routine.

You can also click "Open" once the download has completed.



Once the file is complete this status window will disappear and you will have successfully downloaded the **MPEG.Rx** Installer.

To Install **MPEG.Rx** proceed to [Installation](#).



Installation

At this point, you should have completed the download of the **MPEG.Rx** Setup installer. If you have not done this step, see the [Downloading](#) section.

Locate the file called: **Setup-MPEG.Rx-(VERSION#).exe**
This will be on the drive you identified during download.

Double-click this file to launch the Setup.

The Setup Wizard will prompt you through the necessary steps to complete the **MPEG.Rx** installation.



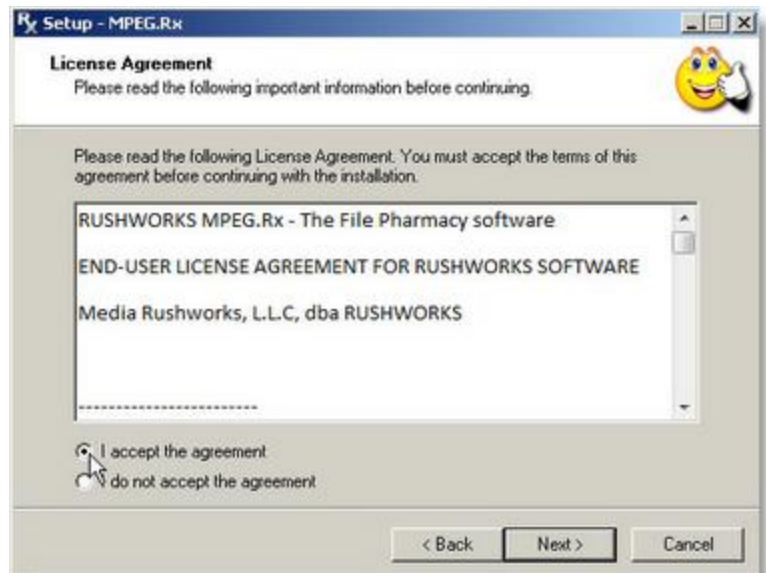
Currently, we are not a verified publisher. Select Run.



At the Welcome screen...click next.



Please read through the RUSHWORKS licensing agreement. If you accept the agreement, select **I accept the agreement.**



Select the destination for **MPEG.Rx**.

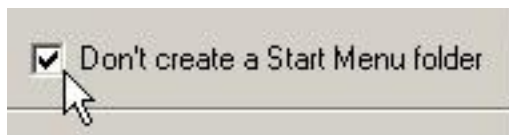
Because **MPEG.Rx** is a video processing program that will be creating and storing fairly large files, **it is highly recommended that you select the drive or partition with the most available storage space on your system.**



If you would like to install the program's shortcuts in your Start Menu, click next.

If you would like to designate an alternate location you may do so by clicking the Browse button and selecting your desired destination.

If you do not want to create a folder in your Start Menu, check this box.



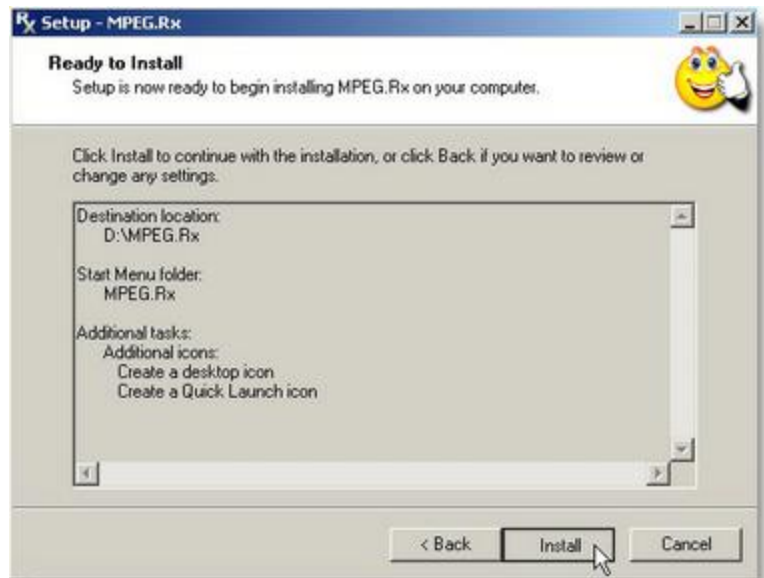
Click **Next**.

On the next screen you may choose to create a Desktop shortcut and a QuickLaunch shortcut. Check the box next to each you would to create and click next.



Setup is now ready to complete the install. Review the options you have selected.

Click install to continue with the installation or click **Back** if you want to review or change any settings.



Setup has finished installing on your computer. If you would like to Launch **MPEG.Rx** immediately, select the Launch option and click **Finish**.

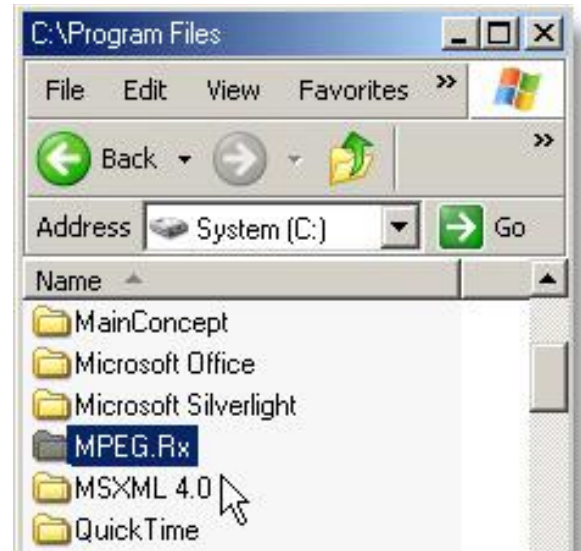
Congratulations!
You have successfully installed MPEG.Rx.



Program Folder

MPEG.Rx does not have a traditional user interface. There are two main folders that contain everything you need to successfully process files. The first is the Program Folder, the other is the Media Folder.

When you download and install the Trial Version it creates a folder called **MPEG.Rx** at the location you specify. That folder contains the application and all the required components for running the program.



Media Folders

Media Folders: Auto Creation

The first time you run **MPEG.Rx**, you will receive this prompt. Chose the drive you would like to use for processing. We recommend using a large drive with a lot of free space. Upon confirmation of your drive choice the installation of the default (recommended) folders will occur. If at any time you delete or rename these folders you will be prompted again when starting the program.



Media Folders

There will be four subfolders created within the Media Folder on the drive you choose:

- **Archive**
- **Output**
- **Watch**
- **Logs**

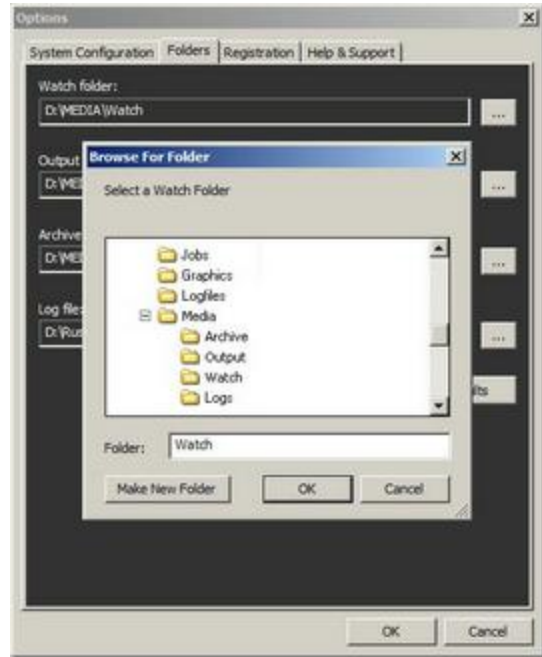


These folders are the default storage locations for all files processed through **MPEG.Rx**. To find out more go to [The Folders Tab](#) page.

Changing your Folders

It is strongly recommended that you use the default data folders. But if you choose not to use them, you can designate other folders to become the **Archive**, **Output**, **Watch**, and **Log** folders.

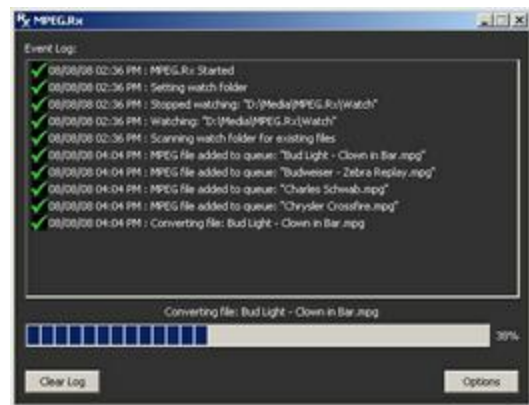
To assign a folder (other than the default), go to the **MPEG.Rx System Configuration** screen and select the **Folders** tab. Select the **Browsing** button to the right of the file path you'd like to change, and browse to select a new folder.



Any MPEG-2 file that you drop into the **Watch** folder will begin processing immediately. If there are multiple files in the Watch folder to be processed, they will be prioritized for processing based on the time they were placed in the folder. Processed files will then be saved to the **Output** folder.

NOTE: By default all files that are 3 weeks old will be deleted from the **Archive** folder.

For more detailed information on these folders and their function go to the [The Folders Tab](#) section.



Uninstall

If you wish to Uninstall **MPEG.Rx**, go to the Start Menu and open the **Control Panel**.



Double click **Add or Remove Programs**.



Locate **MPEG.Rx** and select **Uninstall**.



Trial Version

In order to try out **MPEG.Rx** simply run the program and click the **Try Now** button on the start up screen. The program will need to restart to activate in demo mode. This will only happen the first time you click the Try Now button - each time after that it will go directly to the [Event Log](#).

If you are using the unregistered **Trial Version** of **MPEG.Rx**, the program is fully functional, allowing you to thoroughly navigate the application and examine all the Options.

Within the Trial Version the **output length** of any processed MPEG-2 / VOB file is **limited to 9 seconds**. To allow unrestricted processing, you will need to purchase and register the full version of **MPEG.Rx**.

If you wish to purchase a licensed version, simply choose the **BUY NOW** button on the splash screen at startup. (The Buy Now option is only available in the Trail Version so please download it on the system you wish to run **MPEG.Rx** on)

If you have purchased the full version of the software, then proceed to [Purchasing and Registration](#) for information on completing your registration



Purchasing & Registration

Once you are ready to purchase a fully licensed, registered copy of **MPEG.Rx**, open the trial version and click the **Buy Now** Button.



The **Customer Information** window will appear.



After reading the note stating that you must complete the "Buy Now" process on the computer you plan to run **MPEG.Rx** on, please enter your **Company Name** and **Email Address** in the appropriate boxes. Once you have completed the form, click **Go To Web Page**.

➔ YOU MUST COMPLETE THE BUY NOW PROCESS ON THE COMPUTER YOU WILL BE USING TO PROCESS FILES ←

Orders purchased from the WRONG system will NOT be refunded.

When you run the trial version of MPEG.Rx, the RUSHWORKS website identifies the

computer you are using and records the Hardware ID. When you purchase a full copy, the license you are issued will only be valid for the computer with this Hardware ID. So, before purchase, it is imperative that you are running the trial version of MPEG.Rx directly on the computer you plan to use for file processing and then make your purchase from the same system.

Any information collected for your purchase will not be shared or sold to third parties.

Follow the on screen instructions.

Be sure to read ALL the instructions on the ordering page before placing your order.

Verify that the information you entered on the previous screen is correct.

When you are ready, click **BUY NOW!**

You are about to purchase MPEG.Rx - Please read carefully!

BEFORE YOU CLICK "BUY NOW" ...
Your MPEG.Rx license will be **LOCKED** to the hardware on **THIS COMPUTER!**

If you want to run the program on a **DIFFERENT** computer...
install the Trial Version on **THAT** computer, then revisit this page **FROM THAT COMPUTER** to **BUY NOW!**

Once you complete your purchase, your Activation Code will be emailed to you.

Company Name: YOUR COMPANY NAME
Email Address: YOUR EMAIL ADDRESS
Computer Name: YOUR COMPUTER'S NAME
Hardware ID: YOUR HARDWARE ID

BUY NOW!

VISA MasterCard AMEX BANK PayPal

HOME | PRODUCTS | SERVICES | FORUMS | ABOUT US

All content © RUSHWORKS 2008 • 900 Parker Square, Suite 200 • Flower Mound, TX 75028 • 888-394-RUSH (7874) • solutions@rushworksmedia.com

Payment & Emails

You will be directed to a secure site where you can use a credit card to make your purchase through PayPal - or use your existing PayPal account if you have one.

After your purchase has been completed, you will receive two emails regarding your purchase.

EMAIL 1: PayPal will email that your purchase has been confirmed and processed.

EMAIL 2: RUSHWORKS will send you an **Activation Code**.

PayPal **Secure Payments**

Enter your billing information

Country: United States

First Name:

Last Name:

Credit Card Number:

Payment Type: VISA MasterCard AMEX Discover

Expiration Date: / CSC What's this?

Billing Address Line 1:

Billing Address Line 2 (optional):

City:

State:

ZIP Code:

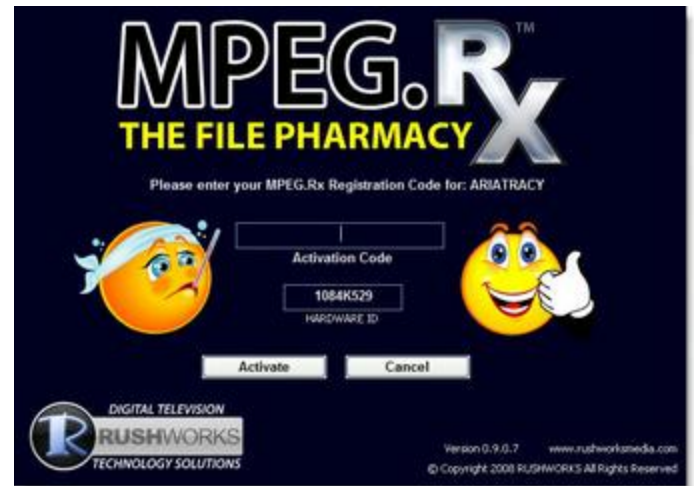
Home Telephone:

Email:

Return to [RUSHWORKS](#)

Activation Code

Within the text of the email you receive from RUSHWORKS, you will find a **10 digit ACTIVATION CODE** that is required for the final step in your purchase. Simply copy this activation code from the email ...



... and paste it into the appropriate box. Then click **Activate**.

Congratulations! Your purchase is complete.



Summary

To complete your purchase of MPEG.Rx ...

1. Download the trial version directly to the computer on which you plan to run the program.
2. Install MPEG.Rx and run the program.
3. Click the **Buy Now** button on the startup screen.
4. Enter your **Company Name** and **Email Address**.
5. Click **Go To Web Page**.
6. Click the large **BUY NOW!** graphic
7. Complete the online purchase
8. Copy your Activation code from the follow-up email from RUSHWORKS
9. Click the **Activate** button.

Start Up

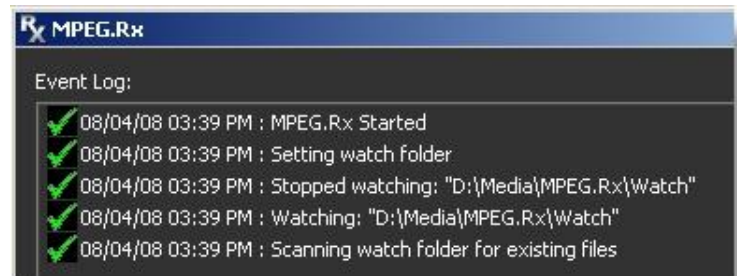
Double-click the **MPEG.Rx** icon on the desktop to launch the program.



If there are none of the required media folders on your system this dialog will appear. Select the drive you wish to use for processing - keeping in mind that video files are large and will use up much of the drive. Once you select a drive and **OK** the necessary folders will be created. If you chose **CANCEL** you will need to set up the folders manually to begin processing. Refer to the [Folders Tab](#) to do so.



MPEG.Rx maintains an event log that constantly monitors all of the application's actions and processes. At start up, the **Event Log** will open and these event messages should appear.



These messages indicate that **MPEG.Rx** has successfully opened and is ready to process files that are dropped into the Watch folder. As you add files to the Watch folder, MPEG.Rx will report each one as they enter the processing queue. When the file has finished copying, MPEG.Rx will process the file according to the settings under the [System Configuration Tab](#).

Interface: Event Log & Options

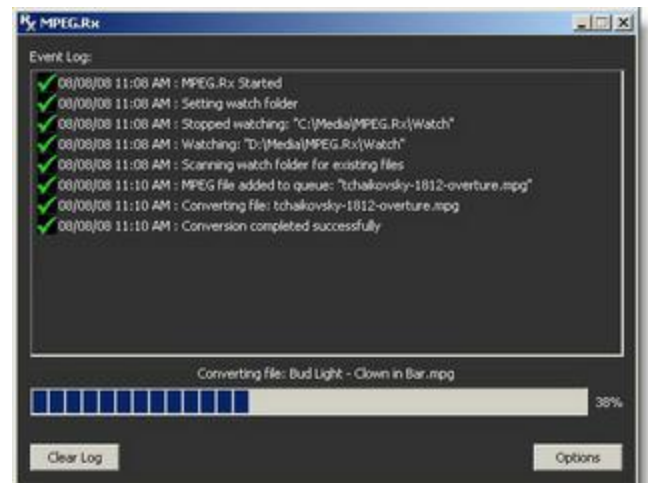
Every time you open the **MPEG.Rx** application you will see the **Event Log**. This window monitors the **Watch** folder and displays the items placed into the processing queue, as well as their completion status. There is also an **Options** button that opens another window; a **Clear Log** button that removes all currently displayed information in the Event Log window; and a processing status bar that indicates the progress (in

%) of the currently processing file.

Event Log

The **Event Log** appears when the program opens. It displays all the actions that **MPEG.Rx** is taking at any given time. You may encounter a variety of processing messages.

For a list of event messages that require user action, proceed to the [Processing Messages](#) section.



Options Button

In the lower right hand corner of the Event Log there is an **Options** button. Pressing this button opens the [Options window](#) that contains the default/user-defined settings for clip management. For a full discussion of the Options settings proceed to [the next chapter](#).

Exiting MPEG.Rx

When you close the Event Log, MPEG.Rx does not shut down!

When you close the **Event Log** ... either by right-clicking the menu bar OR by clicking the (X) in the upper right hand corner of Event Log, **MPEG.Rx** continues to run in the background. The program is minimized to the System Tray continues to process any files that are placed into and/or currently queued in the **Watch** folder.



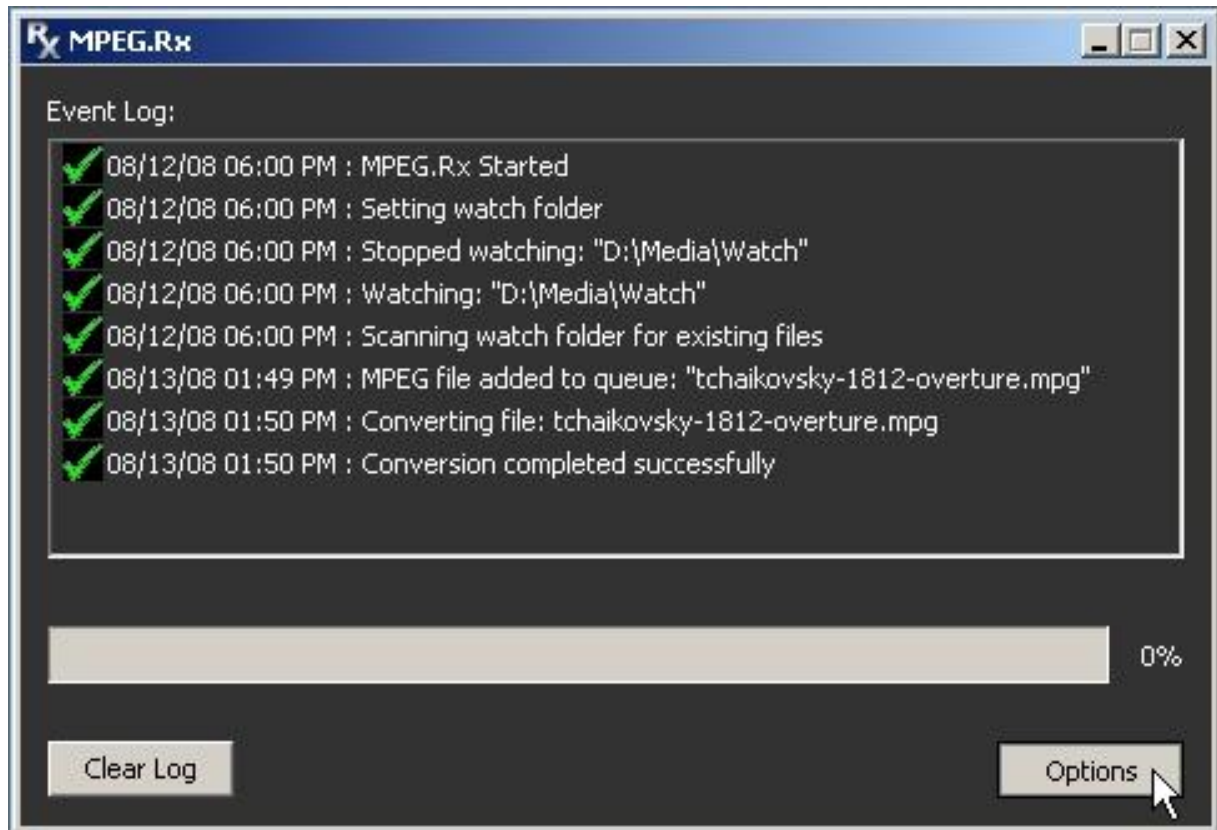
To exit the application, locate the **MPEG.Rx** icon in the System Tray (usually located in the bottom right of your screen), right-click and select **Exit** from the menu.

Remember: when you exit the application, files in the **Watch** folder will not be processed until the program is restarted.



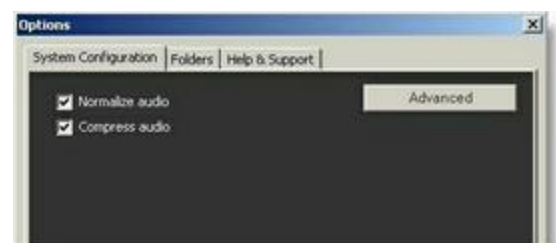
The Options Screen

In the bottom right of the main **MPEG.Rx** Event Log you will find the **Options** button. Clicking this button will take you to the **Options** page allowing you to configure **MPEG.Rx** options.



The System Configuration Tab

The first tab you will see is the **System Configuration** Tab. This is where you control the processing features of **MPEG.Rx**. When you first view this tab, it will have check boxes for **Normalize audio**, and **Compress audio**, as well as a button labeled **Simple**. For most users the simple mode will take care of all of your needs.



If you choose to run in **Advanced mode** simply click on the **Advanced** button. Now you will see the full view which has a section for audio, one for video, and one for archived files. At the bottom of the tab you can specify Process priority and also restore the default settings of the program.

Audio Properties

In the [Audio Properties](#) section are pull downs for audio bitrate, audio sampling rate, normalization level, compression mode, and another check box - this time for disabling the normalization of audio.

Video Properties

In the [Video Properties](#) section are pull down menus for video bitrate, aspect ratio, file structure, and GOP structure. You will also find a check box which will allow you disable transcoding the video if you wish to leave the video portion of your files untouched.

Archive File Deletion

The [Archive File Deletion](#) section allows you to specify how long your old files will stay in the Archive folder before being deleted.



Process Priority / Restore Defaults Section

Process Priority

At the bottom of the **System Configuration** page you will find a pull down menu titled **Process Priority** with 2 items: **Normal** and **Low**.

While **MPEG.Rx** is processing files, it may utilize a substantial amount of system resources depending on the file type and size of the file being processed.

NOTE: It is strongly advised that you do NOT install MPEG.Rx on any system that requires "real-time" priority - such as an automation playback system or encoding system. The demand for system resources could adversely affect smooth playback and error-free encoding.

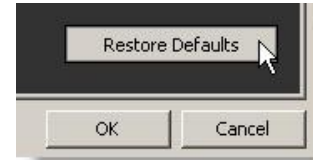


Set at **Normal**, **MPEG.Rx** will process files as fast as possible, pulling and utilizing computing resources as needed. Set at Normal, files processing is the work flow priority.

Set at **Low**, your system will allocate less resources to file processing, allowing the user to run other applications while **MPEG.Rx** is running in the background.

Restore Defaults

The default settings have been selected to optimize files to broadcast standard output. To restore all the system defaults, click the **Restore Defaults** box at the bottom right of the Options screen.



Archive File Deletion Section

The **Archive File Deletion** options allow the user to select the length of time files will remain in the Archive folder before they are automatically deleted. The date of deletion will be timed according to this date each file was processed through **MPEG.Rx**.

NOTE: When files are deleted from the Archive folder using the automatic deletion function, these deletions are permanent and unrecoverable! Any file that has been unintentionally deleted must be replaced by the user.



When you've established your work flow to process all incoming MPEG-2 and DVD files with **MPEG.Rx**, the Archive and Output folders will quickly become full of very large files. It is important to monitor the size of these files and maintain them according to your storage needs. If your hard drive becomes full, **MPEG.Rx** processing will halt ... even in the middle of processing a file.

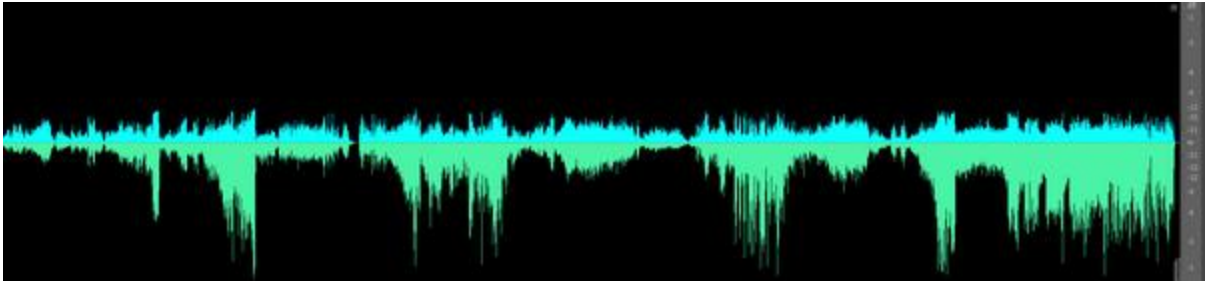
Audio Properties Section

MPEG.Rx solves the ubiquitous problem of inconsistent audio levels in MPEG-2 and DVD/VOB files. This is generally the result of uncertainty among many editors and producers regarding "industry standard" audio levels for digital files.

In order to create an "optimized" audio output, the program defaults to a sophisticated, multi-pass audio

processing algorithm that eliminates "spikes" by applying an 'intelligent limiting' routine. It then analyzes the whole file in sections, normalizing the levels in each section based on level and frequency curves. Then a final pass averages the respective sections into an integrated, optimized file profile with a default output of -12dB. Other output levels can be selected.

The Default settings assure optimal results, so it is suggested that you process all your files with these settings. All your choices are available from two menus: [Simple Settings](#) or [Advanced Settings](#).



Tchaikovsky's "1812 Overture": The Ultimate Challenge

Since this famous composition has a dynamic range in performance of over 60 dB, we deliberately chose it as the "ultimate test" of the audio processing algorithm. This graphic compares the huge range of the original file (green) and the compressed range of the processed file (blue). From the opening string passages to the cannon shots, the level never exceeds -12dB ... and it still sounds great ... using the **MPEG.Rx** Default Normalize and Compress settings.

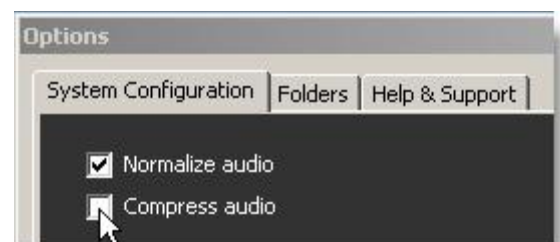
Simple Settings

In simple mode, you have two selectable options: **Normalize** audio and **Compress** audio.

These are the most commonly used functions in **MPEG.Rx**. They will improve the consistency of your server's audio playback and create a much more enjoyable viewing experience for your audience.

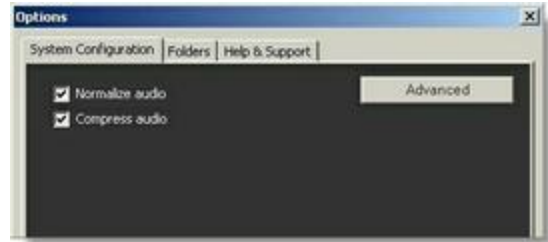
The default settings are:

- Normalize audio to -12dB (The ACM standard for broadcast)
- Compress audio with 6dB of dynamic headroom



Advanced Settings

In order to view the Advanced settings, click the button labeled **Advanced** to the right.



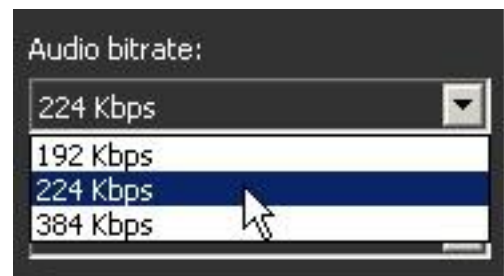
If you enable Advanced mode, many more options are available to you - including audio bitrate, normalization level, and audio sampling rate. These are explained below.



Audio Bitrate

This defines the quality of the audio tracks in your MPEG-2 files. The ACM (Alliance for Community Media) standard is 224kbps, but you can increase or decrease this if you wish. In general, higher numbers equate to higher quality audio.

The Default is 224Kbps.



Normalization Level

This allows you to set the peak level of your audio tracks. The ACM standard for digital television broadcast is -12dB*. The higher numbers (-3dB and -6dB) indicate louder, while -18dB is the quietest option.

The Default is -12dB.



* for digital audio files, the accurate measurement is dBFS (Full Scale)

Audio Sampling Rate

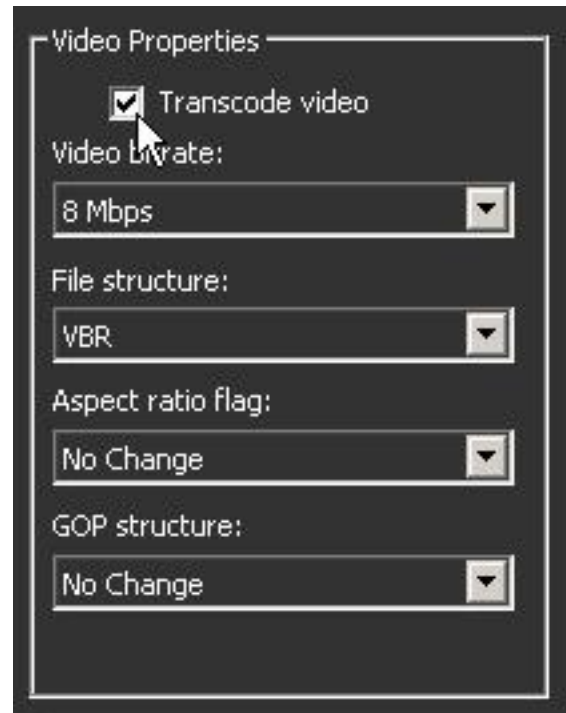
44.1 KHz is the standard for CD quality audio; 48 KHz is the standard for DV recording.

The Default is 48 KHz.



Transcode Video Checkbox

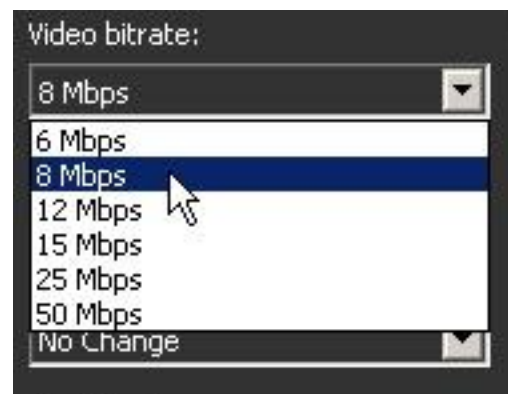
In order to change the Video bitrate, File structure*, or GOP structure, the Transcode video checkbox must be checked. If the Transcode box is not checked, the options will be grayed out and unavailable for change.



Once the transcode box is enabled, **MPEG.Rx** will allow you to adjust the following options ...

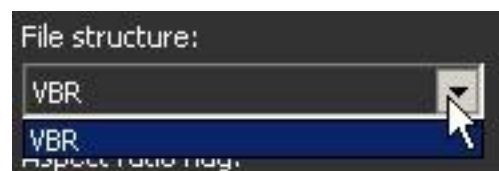
Video Bitrate

This setting will allow you to change the quality of the video files output by **MPEG.Rx**. If your server has maximum or minimum bitrate restrictions, this will also allow you to play files previously unavailable to you. The average for standard definition MPEG-2 files is 6-8 Mbps. Changing this option will significantly increase processing time.



File Structure

This function allows you to change between Variable Bit Rate or Constant Bit Rate. Changing this option will significantly increase processing time.



Aspect Ratio Flag

The aspect ratio flag will allow you to set the flag in the file header to either 4:3 or 16:9. This will not letterbox or stretch the video - it will only inform the playback server what format the file should be viewed.



GOP Structure

If the Transcode box is NOT checked, the default GOP setting will be MAXIMUM size only: 15 frames. In order to change the GOP structure to an alternate fixed size, the Transcode video checkbox must be checked. Changing this option will significantly increase processing time.

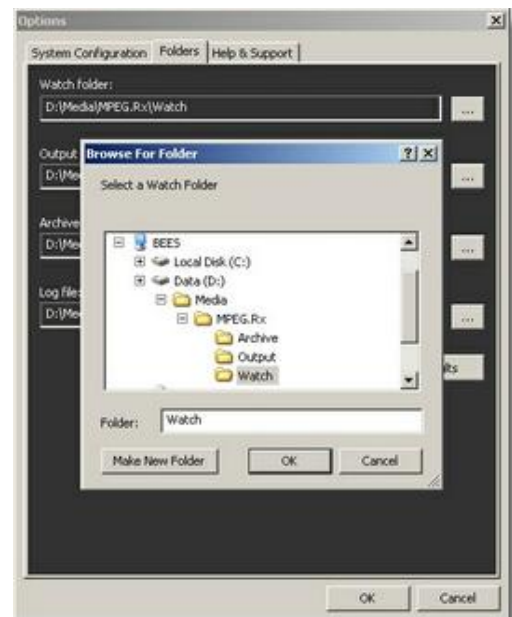


** enabled in a future version of MPEG.Rx*

The Folders Tab

MPEG.Rx installs three folders that are used to organize your files. These folders are automatically set up as your defaults for storage of files used by this application.

The **Folders Tab** allows configuration of the **Watch** folder, the **Output** folder, the **Archive** folder, and the **Log Folder**.



Watch Folder

Any files to be processed are dropped into the **WATCH** folder. The software automatically scans the folder for new entries and keeps a list of what files have been placed in this folder. **MPEG.Rx** will wait until the entire file is copied to the folder before it begins

processing.

Output Folder

All successfully processed media will be moved to the Output folder. Anything **MPEG.Rx** places in this folder will be ready for airing based on your settings specified in the [System Configuration](#) tab.

Archive Folder

A copy of files that have been processed through **MPEG.Rx** will be placed into the Archive folder. The files will remain here until they are deleted according to the rules that have been set in the [Advanced Settings](#). The default setting before deletion is 3 weeks from processed date.

Log Folder

As **MPEG.Rx** processes files it will log events to a text file located inside the Log Folder. If you wish to verify a certain file processed in a large batch, or find more details about an error that occurred - the Log Folder is the place to look.

The Help & Support Tab

Clicking on the **Help & Support** tab provides you with contact information for RUSHWORKS support as well as access to this Help file.



The graphic is a dark-themed rectangular panel with a light blue button at the top right labeled "Show Help File". On the left is a yellow smiley face emoji with a thumbs-up gesture. To its right is the text "MPEG.Rx" in large, bold, white letters, with "FILE PHARMACY" in smaller yellow letters below it. Below this is the text "SUPPORT AND TECHNICAL ASSISTANCE FOR MPEG.Rx IS AVAILABLE VIA EMAIL ONLY:" followed by the email address "rxsupport@rushworksmedia.com" in yellow. At the bottom is the RushWorks logo, which consists of a blue stylized "R" inside a circle, followed by the text "DIGITAL TELEVISION RUSHWORKS TECHNOLOGY SOLUTIONS". At the very bottom, the text "RUSHWORKS 800 Parker Square, Suite 200 Flower Mound, Texas 75028" is on the left, and "Visit us online at RushWorksMedia.com" is on the right.

Processing Files

MPEG.Rx is capable of processing [MPEG-2](#) and [DVD VOB](#) files produced by many different codecs, repairing and regenerating them for successful playback on most video servers.

However, it is possible that some files have been damaged or are otherwise corrupt, and can NOT be successfully processed due to these conditions. These situations should be rare, depending on your source(s) for files.

NOTE: In some cases, if a file fails to process and is placed in the Archive folder, you might try dragging it into the WATCH folder again. It may successfully process with a second attempt.

Batch Processing MPEG-2 Files

Once your folders are set up under the [Folders Tab](#) of the [Options Screen](#), you are ready to start processing files. To begin, simply drag and drop your files into the WATCH folder and MPEG.Rx will begin to process.

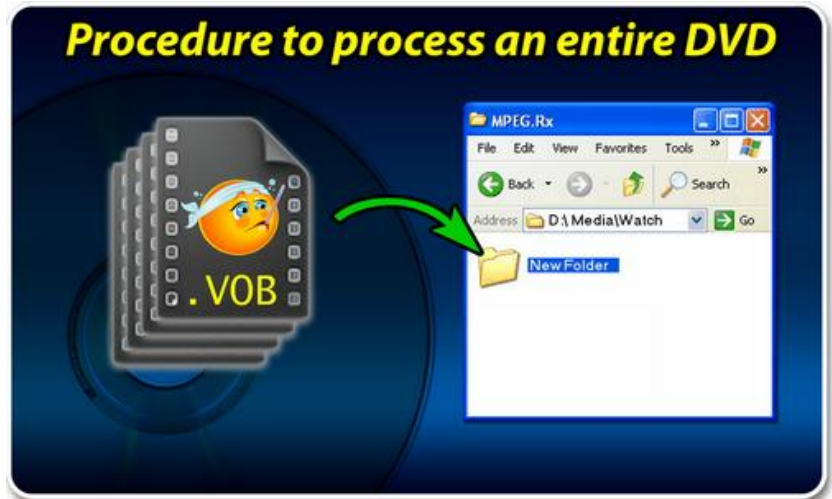
Things to remember:

1. **MPEG.Rx** will process every file according to the settings you have selected in the [System Configuration Tab](#). If a group of files are being processed and you wish to adjust the the settings, the new settings will affect the next file processed. If one file in a "batch list" is being processed, new settings will NOT take effect during the processing of that file. The new settings will effect subsequent files in the list.
2. If you want to process your entire library of MPEG-2/VOB files, it is recommended that you reserve a large amount of disk space for doing so. During processing **MPEG.Rx** creates new, optimized files and puts them in the designated Output folder. The originals are then moved to the Archive folder. It is a good idea to verify the new file before deleting the original file. The original files will remain in the Archive folder according to the rules you have specified in the [Archive File Deletion Section](#) of the [System Configuration Tab](#).

Option 1: Process an entire DVD

MPEG.Rx has an auto-naming feature for DVD processing. To take advantage of this feature:

- 1) Place a **Video DVD*** in the appropriate DVD drive.
- 2) Within the **MPEG.Rx WATCH** folder, create a **NEW** folder and name it what you would like the final processed MPEG-2 file to be named.
- 3) **Copy** the entire **Video_TS** folder (or the contents of that folder) into the **NEW** folder you created inside the Watch folder. Once the files have copied completely, **MPEG.Rx** will begin processing the folder.



Option 2: Process a single file from a DVD

If you want to process a single VOB file which is not part of a DVD structure, then you will need to rename the file from the DVD naming convention format, e.g. `VTS_XX_X.VOB`, to something like `myfile.vob` so that it will be recognized by the auto-parser.

* If you are using a **Data DVD** ... simply drag the MPEG-2 or VOB files to be processed into the Watch folder and let **MPEG.Rx** do the rest.

Event Log / Processing Messages

Event Log Messages

The following is a list of messages that you may encounter in the Event Log window. If you have operational difficulties, be sure to write down any error messages and report them to rxsupport@rushworksmmedia.com to receive assistance.

"MPEG.Rx Started"

"Setting WATCH folder"

"WATCHing: <WATCHFolder>"

"Scanning WATCH folder for existing files"

"Please setup a WATCH Folder: Choose Options, Folders"

"Resetting WATCH folder"

"Scanning new WATCH folder for existing files"

"Error! Unable to WATCH: <WATCHFolder>"

"Stopped WATCHing:"

"Converting file: <filename>"

"Converting DVD: <filename> - Title #<number>"

"Conversion completed successfully"

"Conversion completed successfully, but moving file to archive folder failed!"

"Conversion Failed! Unable to move file to Error directory!"

"Error! Not enough space available to convert: <filename>"

"Error Converting! No such file: <filename>"

"DVD folder added to queue: <DVDFolder>"

"MPEG file added to queue: <filename>"

"VOB file added to queue: <filename>"

"DVD folder removed before conversion: <DVDFolder>"

"MPEG file removed before conversion: <filename>"

"VOB file removed before conversion: <filename>"

"DVD folder path changed: <DVDFolder>"

"MPEG file folder path changed: <filename>"

"VOB file folder path changed: <filename>"

"DVD file name changed: <DVDFolder>"

"MPEG file file name changed: <filename>"

"VOB file file name changed: <filename>"

"Error! WATCH folder no longer exists"

"Error! WATCHing unexpectedly ended"

Other Message Boxes:

"Error! WATCH folder and Output folder cannot be the same"

"Error! WATCH folder and Archive folder cannot be the same"

"Error! Output folder and Archive folder cannot be the same"

Registration Message Boxes:

"Key accepted and registered.

MPEG.Rx must now exit for the registration to take effect"

"Invalid name or key. Please check your entries."

"MPEG.Rx 9-second trial version is now registered.

MPEG.Rx must exit for the registration to take effect."

"Invalid MPEG.Rx 9-second trial registration."

MPEG.Rx will not process any video clips."

Message Boxes on close:

"Are you sure you want to exit?"

Exiting will stop automatic processing of files added to your WATCH folder"

Glossary

Common terms you will encounter in MPEG.Rx:

Aspect Ratio	The ratio of the width of the video to the height of the video. The two main aspect ratios for video are 4x3 and 16x9.
Bit Rate	The number of bits of data sampled per second of video or audio, usually larger numbers means better quality.
CBR	Constant Bit Rate - A file of this type will have the same number of bits sampled every second, and is not dependent on the complexity of the image or sound.
Compressor (Audio Compression)	A device (or software) that reduces the dynamic range of audio.
DVD	A 5.25 inch reflective disk containing video, audio or data.
File Structure	Normally referring to the structure of the video or audio file on a disk, CBR or VBR being the choices.
GOP	Group of Pictures - GOPs can vary in length and structure and can contain various frame types.
Limit (Audio Limiter)	A limiter established a maximum gain setting and prevents the audio signal from getting any louder than that setting.
MPEG	Motion Picture Experts Group - Currently defined are specs for MPEG 1, 2, 3 and 4. Each file has its own purpose, MPEG.Rx currently works with MPEG-2 files.
Normalize	This is a process which increases (or decreases) the gain of an audio file until its loudest point is at the maximum level set by the user.
Rip (Rip a DVD)	Copy the files from a DVD onto a hard disk.
Sampling Rate	The frequency of which a digital sample of video or audio information is taken from an analog wave.
VBR / Variable Bit Rate	A file of this type will have varying sizes sampled each second, based on the complexity of the image or sound
VOB / Video Object	A container for MPEG-2 program streams for use with DVD-Videos.

RUSHWORKS Contact & Support Info

MPEG.Rx™ is a product of RUSHWORKS
© copyright 2009, all rights reserved

www.RUSHWORKS.tv



**SUPPORT AND TECHNICAL ASSISTANCE FOR MPEG.Rx
IS AVAILABLE VIA EMAIL ONLY:**

rxsupport@rushworksmedia.com